



## CERTIFICATE OF ANALYSIS

Product: WITCHES BREW FRAGRANT OIL  
Batch No: 4344104  
Best Before End: DECEMBER 2021

### GENERAL DATA

Appearance PALE YELLOW TO YELLOW LIQUID  
Odour CHARACTERISTIC

### ANALYTICAL DATA

Flash Point (C) >62  
Refractive Index @ 20 C 1.4988  
Specific Gravity @ 20C 1.0326

## ALLERGEN DECLARATION

We hereby confirm that the following item contains the ingredients listed below. Stated are the total levels added plus levels from natural ingredients. The information is supplied to enable compliance with the Seventh Amendment to the EU Cosmetics Directive (76/768/EEC) and the EU Detergents Directive (648/2004/EC).

### WITCHES BREW

Ingredient	CAS	EC	Concentration (%)
Citral	5392-40-5	226-394-6	0.0612%
Coumarin	91-64-5	202-086-7	2.4144%
Eugenol	97-53-0	202-589-1	4.8%
Geraniol	106-24-1	203-377-1	0.03%
Limonene	5989-27-5	227-813-5	1.72923%
Linalool	78-70-6	201-134-4	4.8%
alpha-iso-Methyl Ionone	127-51-5	204-846-3	0.84%

Regulatory Affairs Department



## **CMR STATEMENT**

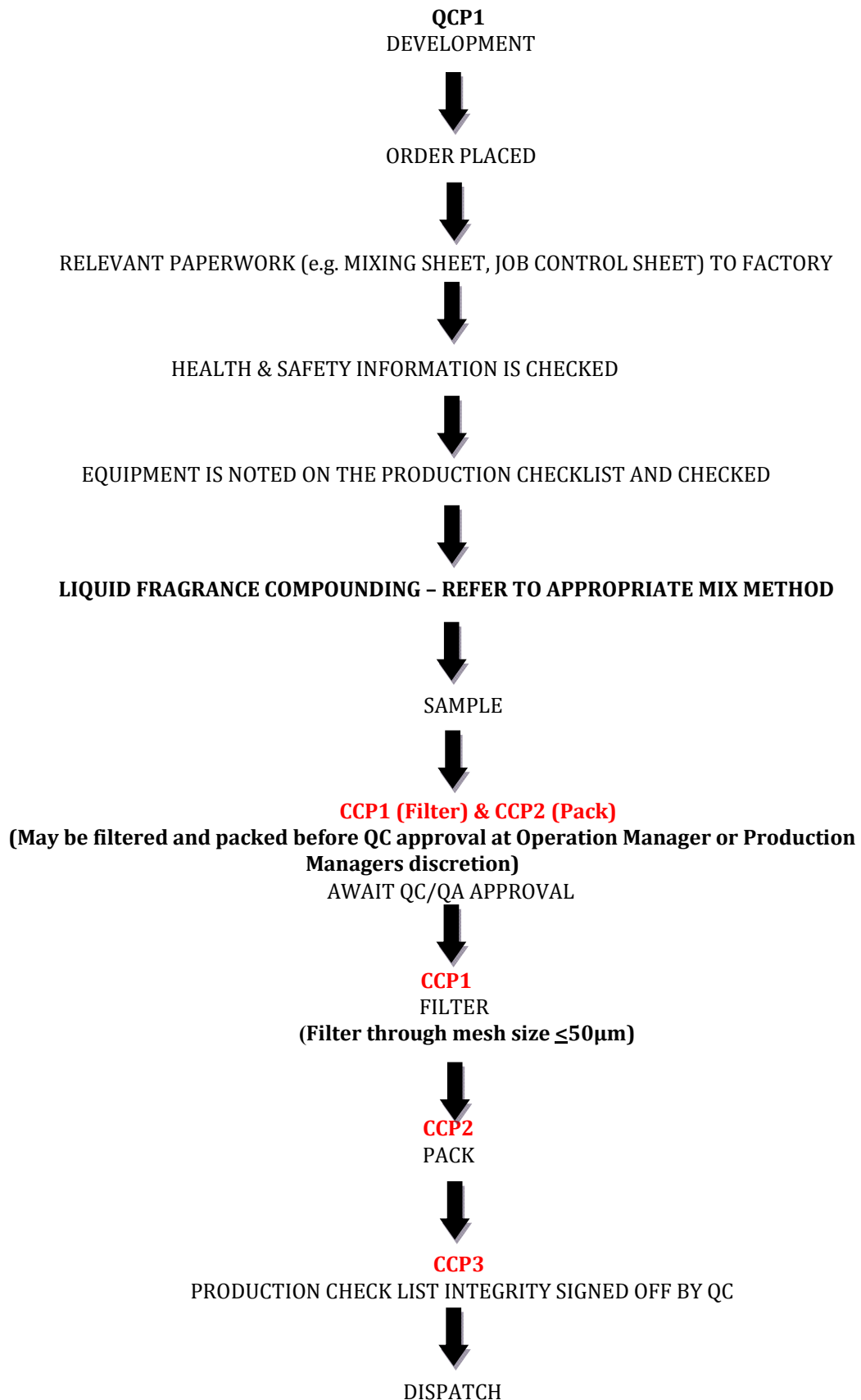
### **PRODUCT: Witches Brew Fragrant Oil**

MADAR Corporation Limited confirms that the above fragrance contains Methyl Eugenol CAS number: 93-15-2 at 0.00048%, this is classified according to Regulation (EC) No.1272/2008, Classification, Labelling and Packaging of substances and mixtures (CLP) Regulation as a Carcinogen Category 2 and Mutagen Category 2

Safrole CAS number: 94-59-7 at 0.00108%, classified according to Regulation (EC) No.1272/2008, Classification, Labelling and Packaging of substances and mixtures (CLP) Regulation as a Carcinogen Category 1B and Mutagen Category 2

8<sup>th</sup> October 2016

**FLOW DIAGRAM INDICATING THE CRITICAL CONTROL POINTS**  
**WITCHES BREW FRAGRANCE OIL**





**GMO STATEMENT**  
**WITCHES BREW FRAGRANT OIL**

Our Supplier of this product does not knowingly or intentionally use GMO derived materials (according to EC Regulation 1829/2003 and 1830/2003) in the manufacture of their products. It is their policy to only manufacture and sell products that are GMO free within the current limits of detection and in the knowledge that adventitious contamination cannot be excluded.

The company requires from all relevant suppliers, written assurances that materials supplied to our Supplier are free from Genetically Modified Organisms and derivatives thereof. To the best of their knowledge all products manufactured and sold by our Supplier are GMO free.

## IFRA CONFORMITY CERTIFICATE

**Product:** WITCHES BREW

We certify that the above item is in compliance with the Standards of the INTERNATIONAL FRAGRANCE ASSOCIATION (IFRA - 48th Amendment / published June 2015), provided it is used in the following classes at a maximum concentration level of:

IFRA classes [see annex for detail]	Maximum level of use (%)
IFRA Class 1 Limit	Not approved
IFRA Class 2 Limit	3.33%
IFRA Class 3.A Limit	10.42%
IFRA Class 3.B Limit	10.42%
IFRA Class 3.C Limit	10.42%
IFRA Class 3.D Limit	10.42%
IFRA Class 4.A Limit	10.42%
IFRA Class 4.B Limit	10.42%
IFRA Class 4.C Limit	10.42%
IFRA Class 4.D Limit	10.42%
IFRA Class 5 Limit	10.42%
IFRA Class 6 Limit	Not approved
IFRA Class 7.A Limit	6.67%
IFRA Class 7.B Limit	6.67%
IFRA Class 8.A Limit	10.42%
IFRA Class 8.B Limit	10.42%
IFRA Class 9.A Limit	10.42%
IFRA Class 9.B Limit	10.42%
IFRA Class 9.C Limit	10.42%
IFRA Class 10.A Limit	10.42%
IFRA Class 10.B Limit	10.42%
IFRA Class 11 Limit	100%

## IFRA CONFORMITY CERTIFICATE

For other kinds of application or use at higher concentration levels, a new evaluation may be needed; please contact MADAR Corporation Ltd.

The IFRA Standards regarding use restrictions are based on safety assessments by the Panel of Experts of the RESEARCH INSTITUTE FOR FRAGRANCE MATERIALS (RIFM) and are enforced by the IFRA Scientific Committee.

Evaluation of individual Fragrance ingredients is made according to the safety standards contained in the relevant section of the IFRA Code of Practice.

It is the ultimate responsibility of our customer to ensure the safety of the final product (containing this fragrance) by further testing if need be.

**Regulatory Affairs Department**

## IFRA CONFORMITY CERTIFICATE

### ANNEX: Definition of IFRA Classes

Finished product types	IFRA class
Lip Products of all types (solid and liquid lipsticks, balms, clear or colored, etc.); Children's Toys	IFRA Class 1 Limit
Deodorant and Antiperspirant Products of all types including any product with intended or reasonably foreseeable use on the axillae or labelled as such (spray, stick, roll-on, under-arm, deo-cologne and body spray, etc.); Nose pore strips; Fragranced Bracelets	IFRA Class 2 Limit
Hydroalcoholic Products Applied To Recently Shaved Skin (includes After Shave) (Edt range)	IFRA Class 3.A Limit
Hydroalcoholic Products Applied To Recently Shaved Skin (includes After Shave) (Fine fragrance range)	IFRA Class 3.B Limit
Eye Products of all types (eye shadow, mascara, eyeliner, eye make-up, etc.) including eye care; Men's Facial Creams and Balms; Baby Creams, Lotions, Oils; Body Paint for Children	IFRA Class 3.C Limit
Tampons	IFRA Class 3.D Limit
Hydroalcoholic Products applied to unshaved skin (includes aqueous based, alcoholic based and hydroalcoholic) like Cologne, eau de cologne, Eau de Parfum or Parfum (Edt range); Ingredients of Perfume Kits; Scent Pads, Foil packs; Scent Strips for hydroalcoholic products	IFRA Class 4.A Limit
Hydroalcoholic Products applied to unshaved skin (includes aqueous based, alcoholic based and hydroalcoholic) like Cologne, eau de cologne, Eau de Parfum or Parfum (Fine fragrance range)	IFRA Class 4.B Limit
Hair Styling Aids Sprays of all types (pumps, aerosol sprays, etc.); Body Creams, Oils, Lotions of all types (except baby creams, lotions and oils); Body sprays (including Body Mist) with no intended or reasonably foreseeable use on the axillae; Fragrance Compounds for Cosmetic Kits; Foot Care Products; Hair deodorant; Body Paint (except those for children)	IFRA Class 4.C Limit
Fragrancing Cream; Solid perfumes	IFRA Class 4.D Limit
Women's Facial Creams/Facial Make-up; Hand Cream; Hand sanitizers; Facial Masks; Baby Powder and Talc; Hair Permanent and other hair chemical treatments (e.g. relaxers) but not hair dyes; Wipes or Refreshing Tissues for Face, Neck, Hands, Body; Dry Shampoo or Waterless Shampoo	IFRA Class 5 Limit
Mouthwash, including Breath Sprays; Toothpaste	IFRA Class 6 Limit
Intimate Wipes; Baby Wipes	IFRA Class 7.A Limit
Insect Repellent (intended to be applied to the skin)	IFRA Class 7.B Limit
Make-up Removers of all types (not including face cleansers); Hair Styling Aids Non-Spray of all types (mousse, gels, leave-in conditioners etc...); Nail Care; All Powders & Talcs (including baby powders and talcs)	IFRA Class 8.A Limit
Hair Dyes	IFRA Class 8.B Limit
Conditioner (Rinse-Off); Liquid Soap; Shampoos of all types (including baby shampoos); Face Cleansers of all types (washes, gels, scrubs, etc.); Shaving Creams of all types (stick, gels, foams, etc.); All Depilatories (including waxes for mechanical hair removal); Body Washes of all types (including baby washes) and Shower Gels of all types; Bar Soap (Toilet Soap); Bath Gels, Foams, Mousses, Salts, Oils and Other Products added to bathwater	IFRA Class 9.A Limit
Feminine hygiene - pads, liners; Toilet paper; Wheat bags	IFRA Class 9.B Limit
Facial tissues; Napkins; Paper towels; 'Other' Aerosols (incl. air freshener sprays and air freshener pump sprays, but not deodorants / antiperspirants, hair styling aids spray and animal sprays)	IFRA Class 9.C Limit
Handwash Laundry Detergents of all types including concentrates; Fabric Softeners of all types including fabric softener sheets; Household Cleaning Products, Other Types (fabric cleaners, soft surface cleaners, carpet cleaners, etc.); Machine Wash Laundry Detergents (liquids, powders, tablets, etc.) including laundry bleach and concentrates; Hand Dishwashing Detergent including concentrates; Hard Surface Cleaners of all types (bathroom and kitchen cleansers, furniture polish, etc.); Shampoos for pets; Dry cleaning kits; Scented gloves, socks, tights with moisturizers	IFRA Class 10.A Limit
Diapers; Toilet seat wipes	IFRA Class 10.B Limit
All non-skin contact or incidental skin contact including: Candles; Air Fresheners and Fragrancing of all types (concentrated aerosol with metered doses (range 0.05-0.5mL/spray), plug-ins, solid substrate, membrane delivery, electrical); Air Delivery Systems; Cell phone cases; Pot pourri, powders, fragrancing sachets, liquid refills for air fresheners (non-cartridge systems), Reed diffusers; Liquid refills for air fresheners (cartridge systems); Shoe Polishes; Deodorizers/Maskers not intended for skin contact (e.g. fabric drying machine deodorizers, carpet powders); Insecticides (mosquito coil, paper, electrical, for clothing etc.) excluding aerosols; Scent delivery system using a dry air technology that releases a fragrance without sprays, aerosols or heated oils (technology of nebulization); Air freshening crystals; Toilet Blocks; Joss Sticks or Incense Sticks; Machine Dishwash Detergent and Deodorizers; Machine-only Laundry Detergent (e.g. liquitabs); Plastic articles (excluding toys); Fuels; Fragranced lamp ring; Scent pack; Scratch and Sniff (sampling technology); Paints; Cat litter; Animal sprays (all types); Treatment products for textiles (e.g. starch sprays, fabric treated with fragrances after wash, deodorizers for textiles or fabrics); Floor wax; Odored Distilled Water (that can be added to steam irons)	IFRA Class 11 Limit



## SAFETY DATA SHEET

In accordance with REACH Regulation EC No.1907/2006

**Product:** WITCHES BREW

**Version:** 2

### Section 1. Identification of the substance or the mixture and of the supplier

#### 1.1 Product Identifier

**Product identifier:** WITCHES BREW (Contains:1-(1,2,3,4,5,6,7,8-Octahydro-2,3,8,8-tetramethyl-2-naphthyl)ethan-1-one, 3-(5,5,6-Trimethylbicyclo{2,2,1}hept-2-yl)cyclohexan-1-ol, Eugenol, Linalool)

**Other identifiers:** None

#### 1.2 Relevant identified uses of the substance of mixture and uses advised against

**Product uses:** For manufacturing purposes only.

#### 1.3 Details of the supplier of the safety data sheet

**Company name:** MADAR Corporation Ltd  
**Company address:** 19-20 Sandleheath Industrial Estate  
 Fordingbridge  
 Hampshire  
 SP6 1PA

**Approved sellers:** Cosmetic Butters, Mystic Moments, New Directions, World of Moulds

**Company phone:** +44 (0) 1425 655555

#### 1.4 Emergency telephone number

**Office hours:** +44 (0) 1425 655555

### Section 2. Hazards identification

#### 2.1 Classification of the substance or mixture

##### **Classification under Regulation (EC) No 1272/2008**

**Class and category of danger:** Skin Corrosion / Irritation Category 2  
 Eye Damage / Irritation Category 2  
 Sensitization - Skin Category 1  
 Hazardous to the Aquatic Environment - Long-term Hazard Category 2  
 H315, Causes skin irritation.  
 H317, May cause an allergic skin reaction.  
 H319, Causes serious eye irritation.  
 H411, Toxic to aquatic life with long lasting effects.

#### 2.2 Label elements

**Signal word:** Warning

**Hazard statements:** H315, Causes skin irritation.  
 H317, May cause an allergic skin reaction.

BiOrigins, 19-20 Sandleheath Industrial Estate, Fordingbridge, Hampshire, SP6 1PA, UK  
 Tel: 01425 655555 Email: technical@madarcorporation.co.uk

## SAFETY DATA SHEET

In accordance with REACH Regulation EC No.1907/2006

**Product:** WITCHES BREW

**Version:** 2

H319, Causes serious eye irritation.  
H411, Toxic to aquatic life with long lasting effects.

**Supplemental Information:** EUH208, Contains alpha-iso-Methyl Ionone, b-Pinene, Coumarin, 2,4-Dimethyl-3-cyclohexen-1-carboxaldehyde, Cineole, Limonene, Rose ketones, Acetyl cedrene. May produce an allergic reaction.

**Precautionary statements:**

P261, Avoid breathing vapour or dust.  
P264, Wash hands and other contacted skin thoroughly after handling.  
P272, Contaminated work clothing should not be allowed out of the workplace.  
P273, Avoid release to the environment.  
P280, Wear protective gloves/eye protection/face protection.  
P302/352, IF ON SKIN: Wash with plenty of soap and water.  
P305/351/338, IF IN EYES: Rinse cautiously with water for several minutes. Remove contact lenses, if present and easy to do. Continue rinsing.  
P333/313, If skin irritation or rash occurs: Get medical advice/attention.  
P337/313, If eye irritation persists: Get medical advice/attention.  
P362, Take off contaminated clothing and wash before reuse.  
P391, Collect spillage.  
P501, Dispose of contents/container to approved disposal site, in accordance with local regulations.

**Pictograms:**



**Other hazards:** None

### Section 3. Composition / information on ingredients

#### 3.2 Mixtures

**Contains:**

Name	CAS	EC	REACH Registration No.	%	Classification for (CLP) 1272/2008
3-(5,5,6-Trimethylbicyclo {2,2,1}hept-2-yl) cyclohexan-1-ol	3407-42-9	222-294-1		5-<10%	SCI 2-EDI 2-EH C3; H315-H319-H412,-
1-(1,2,3,4,5,6,7,8-Octahydro-2,3,8,8-tetramethyl-2-naphthyl) ethan-1-one	54464-57-2, 68155-66-8, 68155-67-9	259-174-3, 268-978-3, 268-979-9		5-<10%	SCI 2-SS 1B-EH A1-EH C1;H315-H317-H410,-
Eugenol	97-53-0	202-589-1		1-<5%	EDI 2-SS 1B;H317-H319,-
Linalool	78-70-6	201-134-4		1-<5%	SCI 2-EDI 2-SS 1B; H315-H317-H319,-

## SAFETY DATA SHEET

In accordance with REACH Regulation EC No.1907/2006

**Product:** WITCHES BREW

**Version:** 2

1-(2-tert-Butyl cyclohexyloxy)-2-butanol	139504-68-0	412-300-2		1-<5%	EH C2;H411,-
3,7-Dimethyl-1,6-octadien-3-yl acetate	115-95-7	204-116-4		1-<5%	SCI 2-EDI 2;H315-H319,-
5-(2,2,3-Trimethyl-3-cyclopentenyl)-3-methylpentan-2-ol	65113-99-7	265-453-0		1-<5%	EDI 2-EH C2;H319-H411,-
Coumarin	91-64-5	202-086-7		1-<5%	SS 1B;H317,-
2-Ethyl-4-(2,2,3-trimethyl-3-cyclopenten-1-yl)-2-buten-1-ol	28219-61-6	248-908-8		1-<5%	SCI 2-EDI 2-EH A1-EH C1;H315-H319-H410,-
Limonene	5989-27-5	227-813-5		1-<5%	FL 3-SCI 2-SS 1B-AH 1-EH A1-EH C1;H226-H304-H315-H317-H400-H410,-
Acetyl cedrene	32388-55-9	251-020-3		1-<5%	SS 1B-EH A1-EH C1;H317-H410,-
alpha-iso-Methyl Ionone	127-51-5	204-846-3		0.1-<1%	SS 1B-EH C2;H315-H317-H411,-
Cineole	470-82-6	207-431-5		0.1-<1%	FL 3-SS 1B;H226-H317,-
a-Cedrene	469-61-4	207-418-4		0.1-<1%	AH 1-EH A1-EH C1;H304-H410,-
beta-Caryophyllene	87-44-5	201-746-1		0.1-<1%	AH 1;H304,-
b-Pinene	127-91-3	204-872-5		0.1-<1%	FL 3-SCI 2-SS 1B-AH 1-EH A1-EH C1;H226-H304-H315-H317-H400-H410,-
2,4-Dimethyl-3-cyclohexen-1-carboxaldehyde	68039-49-6	268-264-1		0.1-<1%	SCI 2-SS 1B-EH C2;H315-H317-H411,-
Rose ketones				0.1-<1%	SS 1A-EH C2;H317-H411,-
p-Mentha-1,4-diene	99-85-4	202-794-6		<0.1%	FL 3-AH 1;H226-H304,-
a-Pinene	80-56-8	201-291-9		<0.1%	FL 3-SCI 2-SS 1B-AH 1-EH A1-EH C1;H226-H304-H315-H317-H410,-
7-Methyl-3-methyleneocta-1,6-diene	123-35-3	204-622-5		<0.1%	FL 3-SCI 2-EDI 2-AH 1;H226-H304-H315-H319,-
delta-3-Carene	13466-78-9	236-719-3		<0.1%	FL 3-SCI 2-SS 1B-AH 1;H226-H304-H315-H317,-
p-Cymene	99-87-6	202-796-7		<0.1%	FL 3-AH 1-EH C2;H226-H304-H411,-
(1S-(1a,3aβ,4a,8aβ))-decahydro-4,8,8-trimethyl-9-methylene-1,4-methanoazulene	475-20-7	207-491-2		<0.1%	SS 1B-AH 1-EH A1-EH C1;H304-H317-H410,-
p-Mentha-1,3-diene	99-86-5	232-268-1		<0.1%	FL 3-ATO 4-AH 1-EH C2;H226-H302-H304-H411,-
p-Mentha-1(7),2-diene	555-10-2	209-081-9		<0.1%	FL 3-AH 1;H226-H304,-

### Substances with Community workplace exposure limits:

Name	CAS	EC	%
Diethyl phthalate	84-66-2	201-550-6	50-100%

## SAFETY DATA SHEET

In accordance with REACH Regulation EC No.1907/2006

**Product:** WITCHES BREW

**Version:** 2

**Substances that are persistent, bioaccumulative and toxic or very persistent and very bioaccumulative, greater than 0.1%:**

Not Applicable

### Section 4. First-aid measures

#### 4.1 Description of first aid measures

IF ON SKIN: Wash with plenty of soap and water.

IF IN EYES: Rinse cautiously with water for several minutes. Remove contact lenses, if present and easy to do. Continue rinsing.

#### 4.2 Most important symptoms and effects, both acute and delayed

Causes skin irritation.

May cause an allergic skin reaction.

Causes serious eye irritation.

#### 4.3 Indication of any immediate medical attention and special treatment needed

None expected, see Section 4.1 for further information.

### SECTION 5: Firefighting measures

#### 5.1 Extinguishing media

Suitable media: Carbon dioxide, Dry chemical, Foam.

#### 5.2 Special hazards arising from the substance or mixture

In case of fire, may be liberated: Carbon monoxide, Unidentified organic compounds.

#### 5.3 Advice for fire fighters:

In case of insufficient ventilation, wear suitable respiratory equipment.

### Section 6. Accidental release measures

#### 6.1 Personal precautions, protective equipment and emergency procedures:

Avoid inhalation. Avoid contact with skin and eyes. See protective measures under Section 7 and 8.

#### 6.2 Environmental precautions:

Keep away from drains, surface and ground water, and soil.

#### 6.3 Methods and material for containment and cleaning up:

Remove ignition sources. Provide adequate ventilation. Avoid excessive inhalation of vapours. Contain spillage immediately by use of sand or inert powder. Dispose of according to local regulations.

## SAFETY DATA SHEET

In accordance with REACH Regulation EC No.1907/2006

**Product:** WITCHES BREW

**Version:** 2

### 6.4 Reference to other sections:

Also refer to sections 8 and 13.

### Section 7. Handling and storage

#### 7.1 Precautions for safe handling:

Keep away from heat, sparks, open flames and hot surfaces. - No smoking. Use personal protective equipment as required. Use in accordance with good manufacturing and industrial hygiene practices. Use in areas with adequate ventilation. Do not eat, drink or smoke when using this product.

#### 7.2 Conditions for safe storage, including any incompatibilities:

Store in a well-ventilated place. Keep container tightly closed. Keep cool. Ground/bond container and receiving equipment. Use explosion-proof electrical, ventilating and lighting equipment. Use only non-sparking tools. Take precautionary measures against static discharge.

#### 7.3 Specific end use(s):

Use in accordance with good manufacturing and industrial hygiene practices.

### Section 8. Exposure controls/personal protection

#### 8.1 Control parameters

Workplace exposure limits:

Ingredient	CAS	EC	Description	Value
Diethyl phthalate	84-66-2	201-550-6	Long-term exposure limit (8-hour TWA) (mg/m <sup>3</sup> )	5
			Short-term exposure limit (15-minute) (mg/m <sup>3</sup> )	10

#### 8.2 Exposure Controls

##### Eye / Skin Protection

Wear protective gloves/eye protection/face protection

##### Respiratory Protection

Ensure adequate and ongoing ventilation is maintained in order to prevent build up of excessive vapour and to ensure occupational exposure limits are adhered to. If appropriate, and depending on your patterns and volumes of use, the following engineering controls may be required as additional protective measures: a) Isolate mixing rooms and other areas where this material is used or openly handled. Maintain these areas under negative air pressure relative to the rest of the plant. b) Employ the use of Personal protective equipment - an approved, properly fitted respirator with organic vapour cartridges or canisters and particulate filters. c) Use local exhaust ventilation around open tanks and other open sources of potential exposures in order to avoid excessive inhalation, including places where this material is openly weighed or measured. In addition, use general dilution ventilation of the work area to eliminate or reduce possible worker exposures. d) Use closed systems for transferring and processing this material.

Also refer to Sections 2 and 7.

## SAFETY DATA SHEET

In accordance with REACH Regulation EC No.1907/2006

**Product:** WITCHES BREW

**Version:** 2

### Section 9. Physical and chemical properties

#### 9.1 Information on basic physical and chemical properties

<b>Appearance:</b>	Pale Yellow To Yellow Liquid
<b>Odour:</b>	Characteristic
<b>Odour threshold:</b>	Not determined
<b>pH:</b>	Not determined
<b>Melting point / freezing point:</b>	Not determined
<b>Initial boiling point / range:</b>	Not determined
<b>Flash point:</b>	> 62 °C
<b>Evaporation rate:</b>	Not determined
<b>Flammability (solid, gas):</b>	Not determined
<b>Upper/lower flammability or explosive limits:</b>	Product does not present an explosion hazard
<b>Vapour pressure:</b>	Not determined
<b>Vapour density:</b>	Not determined
<b>Relative density:</b>	1.0270 - 1.0390
<b>Solubility(ies):</b>	Not determined
<b>Partition coefficient: n-octanol/water:</b>	Not determined
<b>Auto-ignition temperature:</b>	Not determined
<b>Decomposition temperature:</b>	Not determined
<b>Viscosity:</b>	Not determined
<b>Explosive properties:</b>	Not expected
<b>Oxidising properties:</b>	Not expected

**9.2 Other information:** None available

### Section 10. Stability and reactivity

#### 10.1 Reactivity:

Presents no significant reactivity hazard, by itself or in contact with water.

#### 10.2 Chemical stability:

Good stability under normal storage conditions.

#### 10.3 Possibility of hazardous reactions:

Not expected under normal conditions of use.

#### 10.4 Conditions to avoid:

Avoid extreme heat.

## SAFETY DATA SHEET

In accordance with REACH Regulation EC No.1907/2006

**Product:** WITCHES BREW

**Version:** 2

### 10.5 Incompatible materials:

Avoid contact with strong acids, alkalis or oxidising agents.

### 10.6 Hazardous decomposition products:

Not expected.

## Section 11. Toxicological information

### 11.1 Information on toxicological effects

This mixture has not been tested as a whole for health effects. The health effects have been calculated using the methods outlined in Regulation (EC) No 1272/2008 (CLP).

<b>Acute Toxicity:</b>	Based on available data the classification criteria are not met.
Acute Toxicity Oral	>5000
Acute Toxicity Dermal	Not Applicable
Acute Toxicity Inhalation	Not Available
<b>Skin corrosion/irritation:</b>	Skin Corrosion / Irritation Category 2
<b>Serious eye damage/irritation:</b>	Eye Damage / Irritation Category 2
<b>Respiratory or skin sensitisation:</b>	Sensitization - Skin Category 1
<b>Germ cell mutagenicity:</b>	Based on available data the classification criteria are not met.
<b>Carcinogenicity:</b>	Based on available data the classification criteria are not met.
<b>Reproductive toxicity:</b>	Based on available data the classification criteria are not met.
<b>STOT-single exposure:</b>	Based on available data the classification criteria are not met.
<b>STOT-repeated exposure:</b>	Based on available data the classification criteria are not met.
<b>Aspiration hazard:</b>	Based on available data the classification criteria are not met.

### Information about hazardous ingredients in the mixture

Not Applicable

Refer to Sections 2 and 3 for additional information.

## Section 12. Ecological information

### 12.1 Toxicity:

Toxic to aquatic life with long lasting effects.

**12.2 Persistence and degradability:** Not available

**12.3 Bioaccumulative potential:** Not available

**12.4 Mobility in soil:** Not available

### 12.5 Results of PBT and vPvB assessment:

This substance does not meet the PBT/vPvB criteria of REACH, annex XIII.

## SAFETY DATA SHEET

In accordance with REACH Regulation EC No.1907/2006

**Product:** WITCHES BREW

**Version:** 2

### 12.6 Other adverse effects:

This material contains \*% Volatile Organic Compounds. : < 2.37453 %

### Section 13. Disposal considerations

#### 13.1 Waste treatment methods:

Dispose of in accordance with local regulations. Avoid disposing into drainage systems and into the environment. Empty containers should be taken to an approved waste handling site for recycling or disposal.

### Section 14. Transport information

**14.1 UN number:** UN3082  
**14.2 UN Proper Shipping Name:** ENVIRONMENTALLY HAZARDOUS SUBSTANCE, LIQUID, N.O.S. (1-(1,2,3,4,5,6,7,8-Octahydro-2,3,8,8-tetramethyl-2-naphthyl)ethan-1-one, a-Cedrene)  
**14.3 Transport hazard class(es):** 9  
**Sub Risk:** -  
**14.4. Packing Group:** III  
**14.5 Environmental hazards:** This is an environmentally hazardous substance.  
**14.6 Special precautions for user:** None additional  
**14.7 Transport in bulk according to Annex II of MARPOL73/78 and the IBC Code:**  
 Not applicable

### Section 15. Regulatory information

#### 15.1 Safety, health and environmental regulations/legislation specific for the substance or mixture

None additional

#### 15.2 Chemical Safety Assessment

A Chemical Safety Assessment has not been carried out for this product.

### Section 16. Other information

**Concentration % Limits:** EH C2=15.80% EH C3=1.57% EH C4=90.05% SCI 2=40.81% EDI 2=40.69% SS 1=16.67%  
**Total Fractional Values:** EH C2=6.33 EH C3=63.53 EH C4=1.11 SCI 2=2.45 EDI 2=2.46 SS 1=6.00

#### Key to revisions:

Classification under Directive 1999/45/EC  
 Classification under Directive 67/548/EEC  
 Classification under Regulation (EC) No 1272/2008  
 Concentration % Limits  
 SECTION 3: Composition/information on ingredients



## SAFETY DATA SHEET

In accordance with REACH Regulation EC No.1907/2006

**Product:** WITCHES BREW

**Version:** 2

Total Fractional Values

Workplace exposure limits

**Key to abbreviations:**

Abbreviation	Meaning
AH 1	Aspiration Hazard Category 1
ATO 4	Acute Toxicity - Oral Category 4
EDI 2	Eye Damage / Irritation Category 2
EH A1	Hazardous to the Aquatic Environment - Acute Hazard Category 1
EH C1	Hazardous to the Aquatic Environment - Long-term Hazard Category 1
EH C2	Hazardous to the Aquatic Environment - Long-term Hazard Category 2
EH C3	Hazardous to the Aquatic Environment - Long-term Hazard Category 3
FL 3	Flammable Liquid, Hazard Category 3
H226	Flammable liquid and vapour.
H302	Harmful if swallowed.
H304	May be fatal if swallowed and enters airways.
H315	Causes skin irritation.
H317	May cause an allergic skin reaction.
H319	Causes serious eye irritation.
H400	Very toxic to aquatic life.
H410	Very toxic to aquatic life with long lasting effects.
H411	Toxic to aquatic life with long lasting effects.
H412	Harmful to aquatic life with long lasting effects.
P210	Keep away from heat, sparks, open flames and hot surfaces. - No smoking.
P233	Keep container tightly closed.
P240	Ground/bond container and receiving equipment.
P241	Use explosion-proof electrical, ventilating and lighting equipment.
P242	Use only non-sparking tools.
P243	Take precautionary measures against static discharge.
P261	Avoid breathing vapour or dust.
P264	Wash hands and other contacted skin thoroughly after handling.
P270	Do not eat, drink or smoke when using this product.
P272	Contaminated work clothing should not be allowed out of the workplace.
P273	Avoid release to the environment.
P280	Wear protective gloves/eye protection/face protection.
P301/310	IF SWALLOWED: Immediately call a POISON CENTER or doctor/physician.
P302/352	IF ON SKIN: Wash with plenty of soap and water.
P303/361/353	IF ON SKIN (or hair): Remove/take off immediately all contaminated clothing. Rinse skin with water/shower.
P305/351/338	IF IN EYES: Rinse cautiously with water for several minutes. Remove contact lenses, if present and easy to do. Continue rinsing.
P330	Rinse mouth.
P331	Do not induce vomiting.
P332/313	If skin irritation occurs: Get medical advice/attention.

## SAFETY DATA SHEET

In accordance with REACH Regulation EC No.1907/2006

**Product:** WITCHES BREW

**Version:** 2

P333/313	If skin irritation or rash occurs: Get medical advice/attention.
P337/313	If eye irritation persists: Get medical advice/attention.
P362	Take off contaminated clothing and wash before reuse.
P363	Wash contaminated clothing before reuse.
P370/378	In case of fire: Use carbon dioxide, dry chemical, foam for extinction.
P391	Collect spillage.
P403/235	Store in a well-ventilated place. Keep cool.
P405	Store locked up.
P501	Dispose of contents/container to approved disposal site, in accordance with local regulations.
SCI 2	Skin Corrosion / Irritation Category 2
SS 1A	Sensitization - Skin Category 1A
SS 1B	Sensitization - Skin Category 1B

The information in this safety data sheet is to the best of our knowledge true and accurate but all data, instructions, recommendations and/or suggestions are made without guarantee.

## **SPECIFICATION**

**Product:** WITCHES BREW

### **GENERAL DATA**

Odour: Characteristic  
Appearance: Pale Yellow To Yellow Liquid

### **ANALYTICAL DATA**

Flash Point: > 62 °C  
Flash Point (Fahrenheit): > 144 °F  
Specific Gravity @ 20°C: 1.0270 - 1.0390  
Refractive Index @ 20°C: 1.4920 - 1.5040

### **STORAGE AND HANDLING**

STORAGE: Store in well-sealed containers in cool, dry, dark place. Ideal temperature between 15-25°C (59-77°F). It is not recommended to store this material below 10°C or above 25°C.

Prepared by: Quality Control Department

This document was processed automatically and therefore has no signature